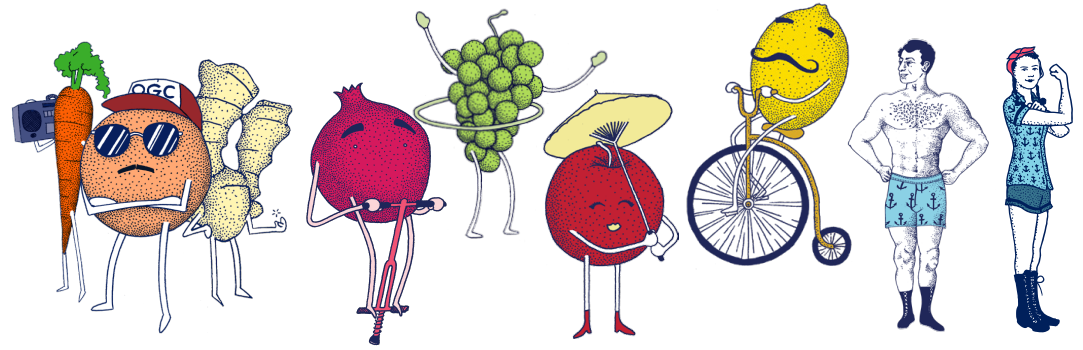




# HEALTH·ADE KOMBUCHA



## NOW ON TAP!

### THE BEST TASTING AND HIGHEST QUALITY KOMBUCHA YOU CAN BUY

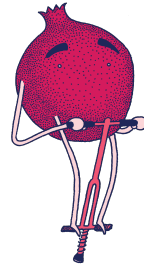


# FLAVORS ON TAP



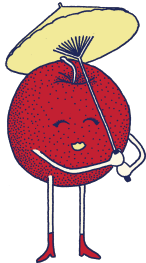
## ORIGINAL

On Tap



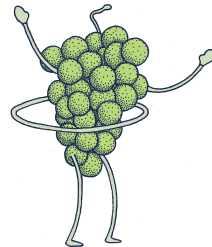
## POMEGRANATE

On Tap



## PINK LADY APPLE

On Tap



## GRAPE

On Tap



## BEET

On Tap



# THE BEST TASTING AND HIGHEST QUALITY KOMBUCHA YOU CAN BUY.

## SPECIFICATIONS:

5.3 Gallons / 678.4 oz  
85 8 oz servings  
9.5" diameter x 24" high, 45 lbs  
Pallet @ 40 kegs  
Cubic volume 1.388<sup>3</sup>  
Ti - 20 kegs & Hi - 2  
Shelf life: 3-6 months  
Refrigerated beverage  
New Petainer Recyclable Keg

Ingredients: filtered water, kombucha culture (yeast and bacteria cultures), organic black tea, organic green tea, organic evaporated cane juice (sugar), fresh cold pressed organic juice.

\*Our Kombucha is rigorously tested by TTB and KBI certified methods for alcohol, and is sold as non alcoholic, under 0.5% ABV



844-ferment  
sales@health-ade.com  
www.health-ade.com

company/health-ade

@healthade /healthade @healthadel